

Homework #1A

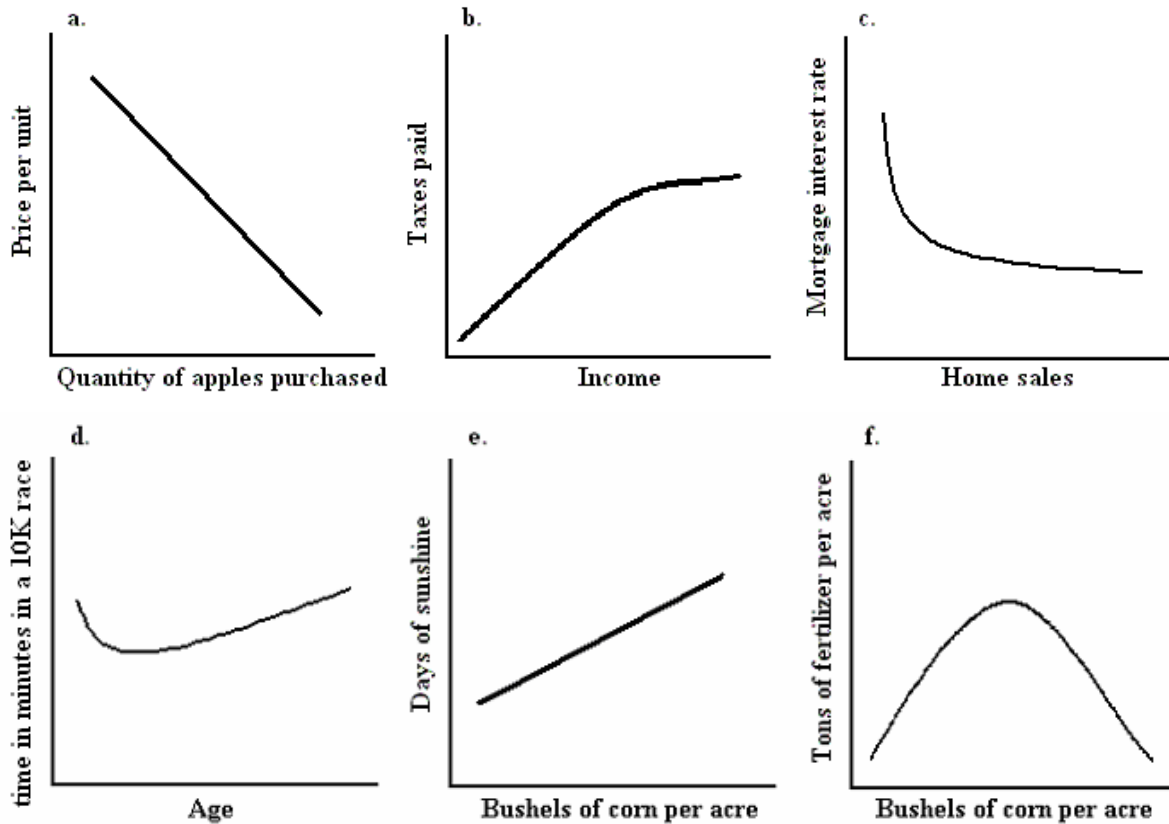
problems #1–3, from Ch. 1, p. 23
of Case/Fair *Principles...*(6th ed.)

1. Graph each of the following sets of numbers. Draw a line through the points and calculate the slope of each line.

1		2		3		4		5		6	
X	Y	X	Y	X	Y	X	Y	X	Y	X	Y
1	5	1	25	0	0	0	40	0	0	0.1	100
2	10	2	20	10	10	10	30	10	10	0.2	75
3	15	3	15	20	20	20	20	20	20	0.3	50
4	20	4	10	30	30	30	10	30	10	0.4	25
5	25	5	5	40	40	40	0	40	0	0.5	0

2. For each of the graphs in Figure 1 below, say whether the curve has a positive or negative slope. Give an intuitive explanation for the slope of each curve.

Figure 1.



3. For each of the following equations, graph the line and calculate its slope.

- $P = 10 - 2q$ (Put q on the X-axis)
- $P = 100 - 4q$ (Put q on the X-axis)
- $P = 50 + 6q$ (Put q on the X-axis)
- $I = 10,000 - 500r$ (Put I on the X-axis)